



eurocopter  
*AS355 NP*



eurocopter  
an EADS Company

thinking without limits



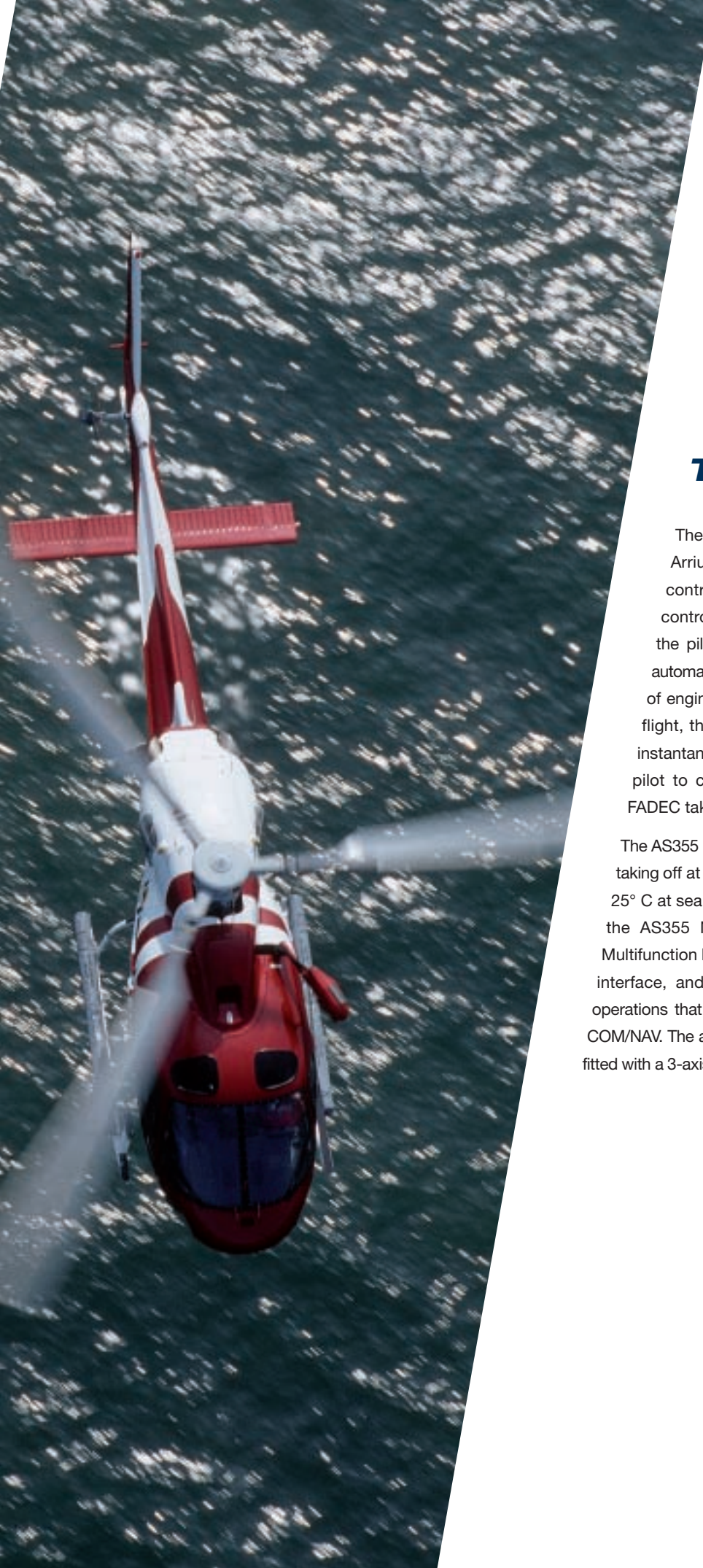


## ***When Performance Meets Affordability***

With excellent handling, robustness and ease of maintenance, the AS355 NP incorporates twin-engine added reliability and performance—making it ideal for police and parapublic missions, as well as demanding operations over water, rugged terrain and urban areas.

Renowned for its low operation and maintenance costs, this helicopter benefits from the reliability and safety of its two Turbomeca Arrius 1A1 engines, and is equipped with a full authority digital engine control (FADEC) system. The AS355 NP is fully IFR certified and can be fitted with a 3-axis autopilot, along with mission-specific equipment for medical evacuation and law enforcement operations. The helicopter also offers excellent maneuverability, high speed and low vibration levels. An unobstructed cabin and forward-looking seats provides excellent visibility for all passengers, and the AS355 NP's very low vibration levels make it a perfect choice for corporate transportation.

The flexible, reliable and economical AS355 NP is one of the most successful twin-engine helicopters in the world, with 750 delivered and over 3.4 million flight hours achieved.



## ***Technology***

The AS355 NP is equipped with two powerful Turbomeca Arrius 1A1 engines and a full authority digital engine control (FADEC) system that provides automated engine control and monitoring. With this state-of-the-art system, the pilot has no engine parameters to monitor during the automatic starting sequence, which thereby eliminates the risk of engine deterioration. In the event of engine failure during flight, the maximum emergency power is automatically and instantaneously provided to the operating engine, enabling the pilot to concentrate on the external environment while the FADEC takes control.

The AS355 NP provides excellent OEI performance: It is capable of taking off at MTOW in Cat A from a helipad at temperatures up to 25° C at sea level. Just as other helicopters in the Ecureuil family, the AS355 NP is also equipped with a Vehicle and Engine Multifunction Display (VEMD), which optimizes the human-machine interface, and a standard avionics suite for day and night VFR operations that includes a GPS color map display and a redundant COM/NAV. The aircraft is fully IFR certified (single/dual pilot) and can be fitted with a 3-axis autopilot as well as mission-specific equipment.



News gathering



Medical service

## Multipurpose Missions

### The Reliable Twin-Engine AS355 NP

Equipped with state-of-the-art technology, the twin-engine AS355 NP can perform all type of missions including law enforcement and public services both day and night, whether over water, congested areas or hostile environments.

The AS355 NP's unobstructed cabin and forward-facing seats guarantee excellent visibility for passengers. As an option, footsteps and sliding doors can be installed to provide easy access to the wide cabin. The helicopter is equipped with an array of certified equipment to perform a wide range of operations with optimal efficiency, including:

- Surveillance
- Command and control
- Light Search and Rescue
- Border patrol
- Aerial support for ground operations
- Coastal surveillance.



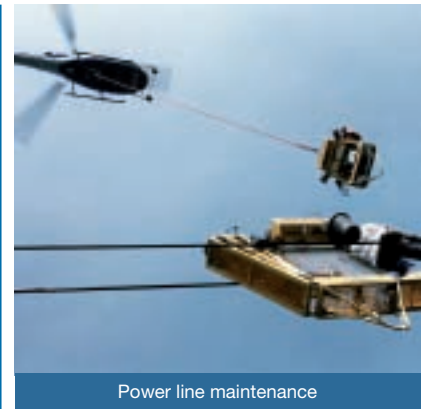
The helicopter's open cockpit concept and low vibration levels make it possible to install fully-integrated law enforcement instrument panels and tactical consoles. Installing optional equipment is also simple in order to effectively perform missions such as:

- Harbor pilot transportation
- Sling load operations
- News gathering
- Power line maintenance and repair
- Bungee jumping
- Radioactivity measurement.

For EMS operations, the AS355 NP can carry one patient and two medical attendants in addition to a pilot and a considerable payload for the most demanding high and hot missions, over a distance of 713 km (385 NM) and at a cruising speed of 222 km/hr (120 kts).

Its high-performance rotors make it easy to maneuver the helicopter even in tight spaces, and offer a high level of safety when flying above urban environments. Just as the other helicopters in the Ecureuil family, the AS355 NP can be equipped with a large selection of medical kits and can be operated from elevated hospital helipads in congested areas.

When fitted with a Stylen® interior layout, the AS355 NP is an exceptional choice for efficient and comfortable passenger transportation.



Power line maintenance



Passenger transportation



VEMD



### **Support and Services**

Eurocopter is committed to supporting your Eurocopter product with the same level of excellence that you have come to expect from our aircraft themselves. We are dedicated to looking out for the best interests of our customers, whether this be maximizing flight revenues, ensuring public safety or saving lives. Our customer support team is at your service 24/7 to keep you flying.

### **Your Satisfaction is Our Top Priority.**

In order to provide the individualized attention our customers require, we offer:

- A worldwide service network of 24 subsidiaries and participations, along with more than 100 distributors, representatives, training centers, repair and overhaul facilities, and maintenance centers, as well as logistic hubs in France, Hong Kong and the USA.
- Customer Service Centers in Europe, Asia and the USA offering around-the-clock worldwide customer assistance, seven days a week, 365 days a year.
- A world of services to meet customers' needs in terms of technical support, component repair and overhaul services, parts and spares support, technical publications and training—at our facilities, or yours.





### CAPACITY

Passenger transportation	1 pilot + 5 passengers (standard version)
	1 pilot + 4 passengers (Stylence® installation)
	1 pilot + 6 passengers (high density version)
Casualty evacuation	1 pilot + 1 stretcher + 2 medical attendants
Cargo	1 pilot + 3 m <sup>3</sup> (105.9 ft <sup>3</sup> ) in the cabin

### WEIGHTS

Maximum takeoff weight	2,600 kg	5,732 lbs
Maximum takeoff weight with external load	2,800 kg	6,172 lbs
Maximum cargo swing load	1,134 kg	2,500 lbs
Empty weight (standard configuration)	1,493 kg	3,292 lbs
Useful load (standard configuration)	1,107 kg	2,440 lbs
Standard fuel capacity	577 kg	1,272 lbs

### POWER PLANT

#### 2 Turbomeca Arrius 1A1 engines

Takeoff power	343 kW	460 shp
Maximum emergency power (OEI 2.5 minutes)	415 kW	556 shp

### PERFORMANCE AT MTOW, SEA LEVEL, ISA AND ZERO WIND CONDITION

Maximum speed (Vne)	278 km/h	150 kts
Fast cruise speed (at MCP)	222 km/h	120 kts
Recommended cruise speed	218 km/h	117 kts
Rate of climb (at MCP)	6.6 m/sec	1,296 ft/min
Service ceiling (1m/sec - 200 ft/mn)	4,050 m	13,380 ft
Hover ceiling at takeoff power ISA-IGE	2,575 m	8,450 ft
Maximum range without reserve at recommended cruise speed (RCS)	731 km	395 NM
Endurance without reserve at 102 km/hr – 55 kts	4 hrs, 35 min	

### OPERATIONAL LIMITATIONS

Maximum altitude (PA)	6,096 m	20,000 ft
Minimum temperature	- 40° C/- 40° F	
Maximum temperature	ISA + 35° C/+ 95° F, limited to + 50°C/+ 122° F	

The data set forth in this document is for information purposes only, and may vary with conditions.

For performance data and operational limitations, reference see approved flight manual and all associated documents.






an EADS Company

[www.eurocopter.com](http://www.eurocopter.com)

AS355NP-F.04.09-E. Designed by Eurocopter - Photos: Patrick Penna - Christophe Guibbaud - Lorette Fabre - Jérôme Deulin - Charles Debos.

 eurocopter, Thinking without limits, AS355 - Ecureuil - Stylenca are trademarks of the Eurocopter Group. Corporate Communications Department.

Eurocopter reserves the right to make configuration and data changes at any time without notice.

The facts and figures contained in this document and expressed in good faith do not constitute any offer or contract with Eurocopter.



Printed on PEFC certified paper originating from sustainable forests.